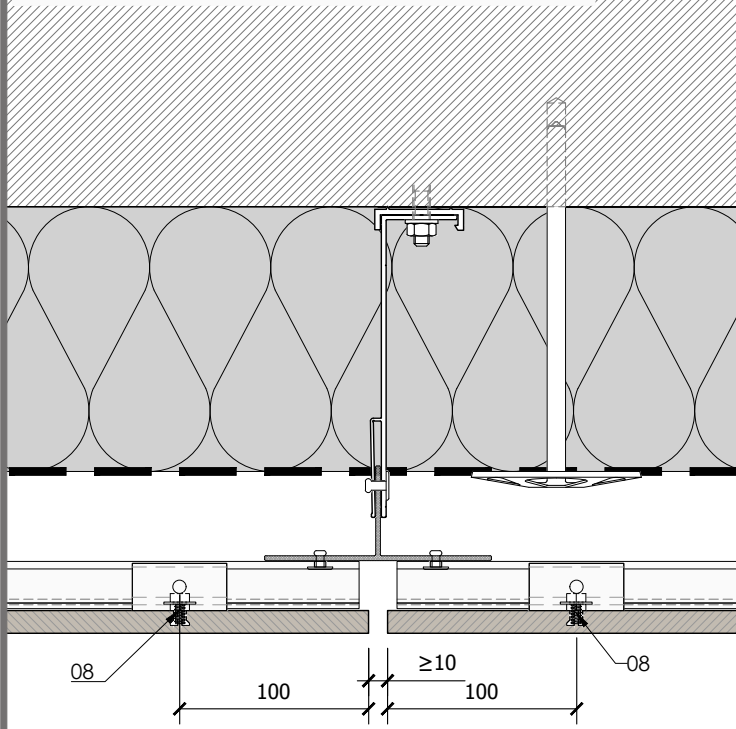
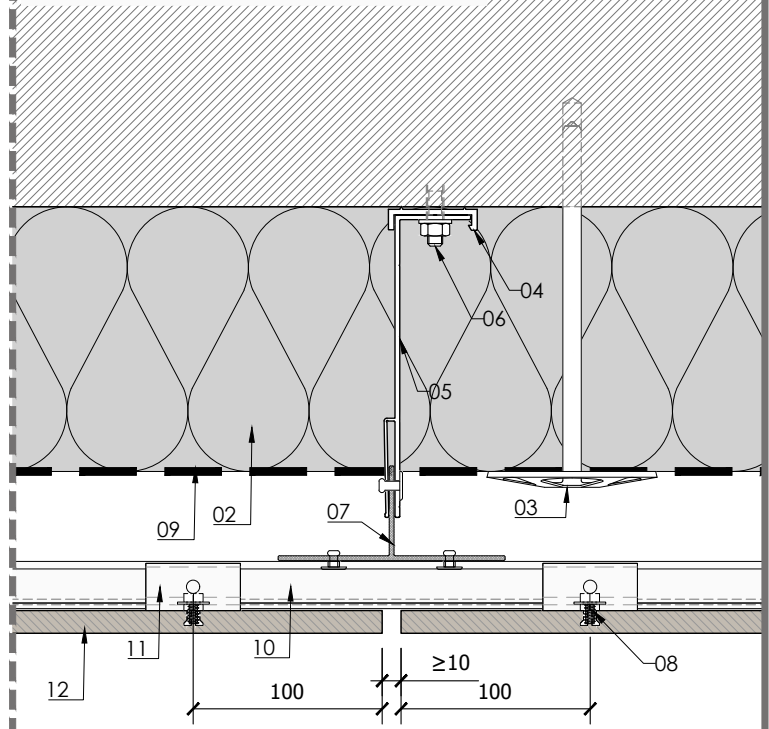


## SYSTEM LAPITEC H1 FIXING WITH KEIL KH AA

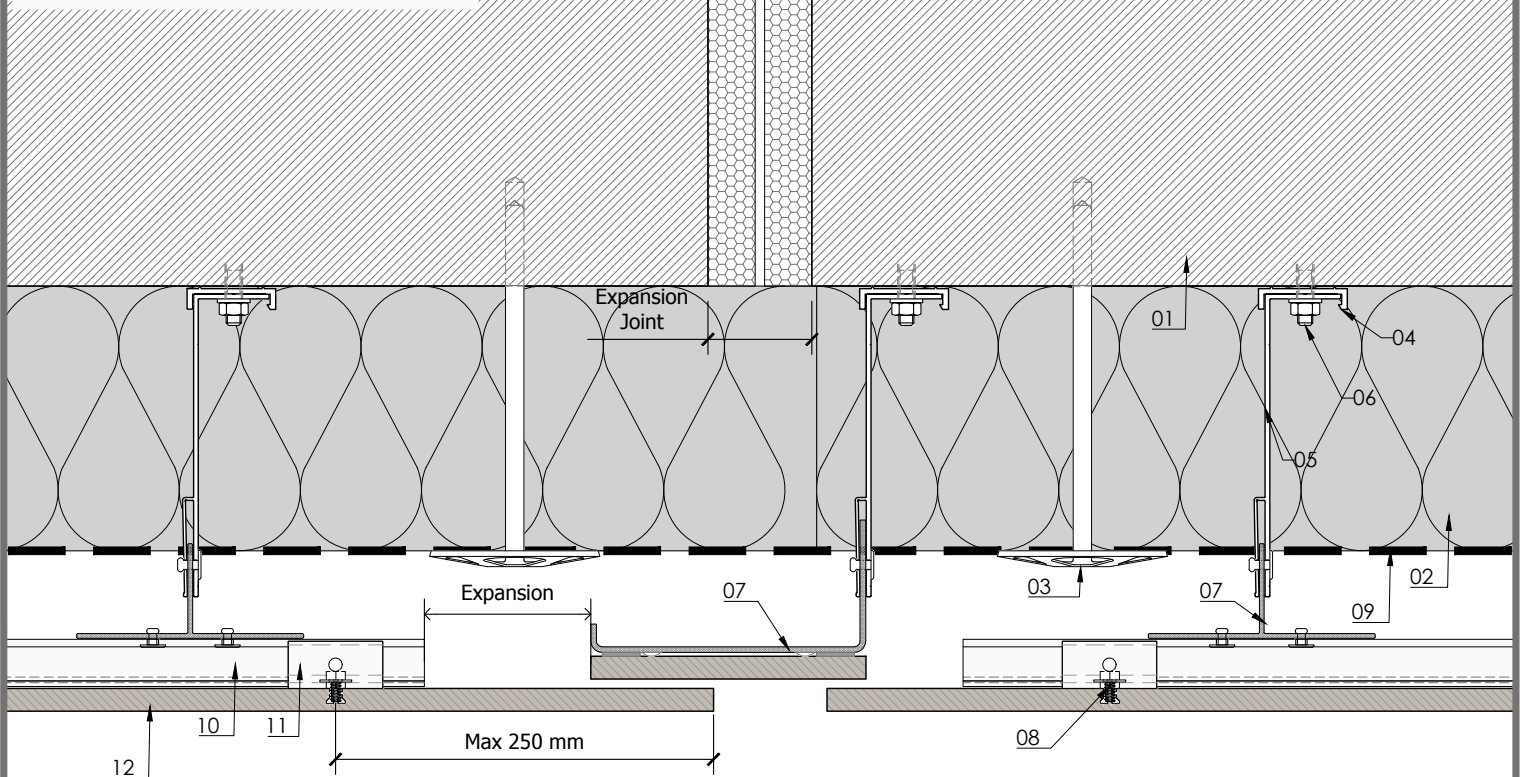
Detail H1-1 Vertical joint (horizontal C rails junction)



Detail H1-2 Vertical joint



Detail H1-3 Vertical expansion joint



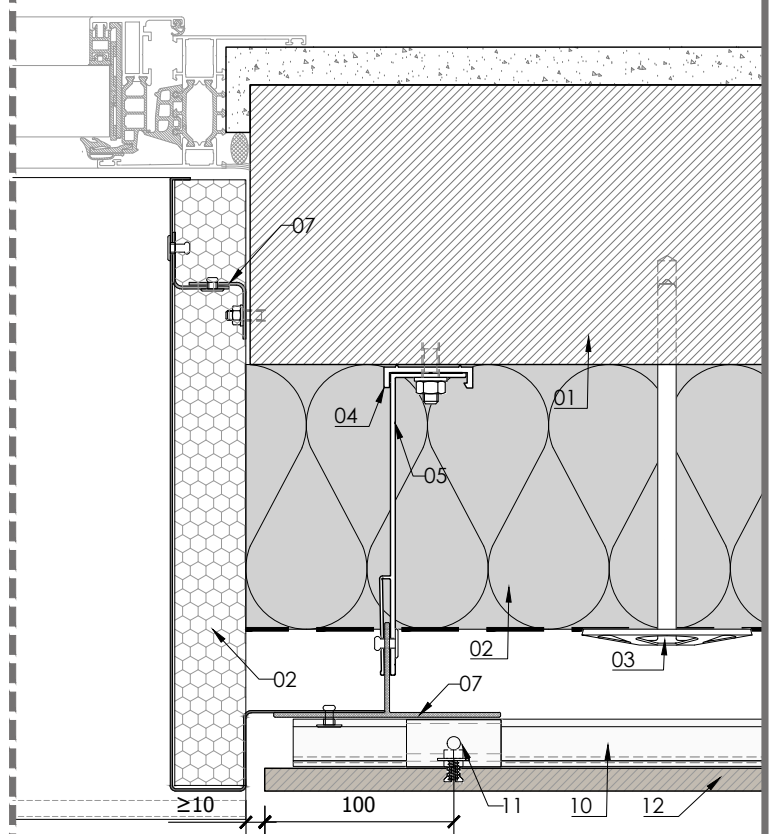
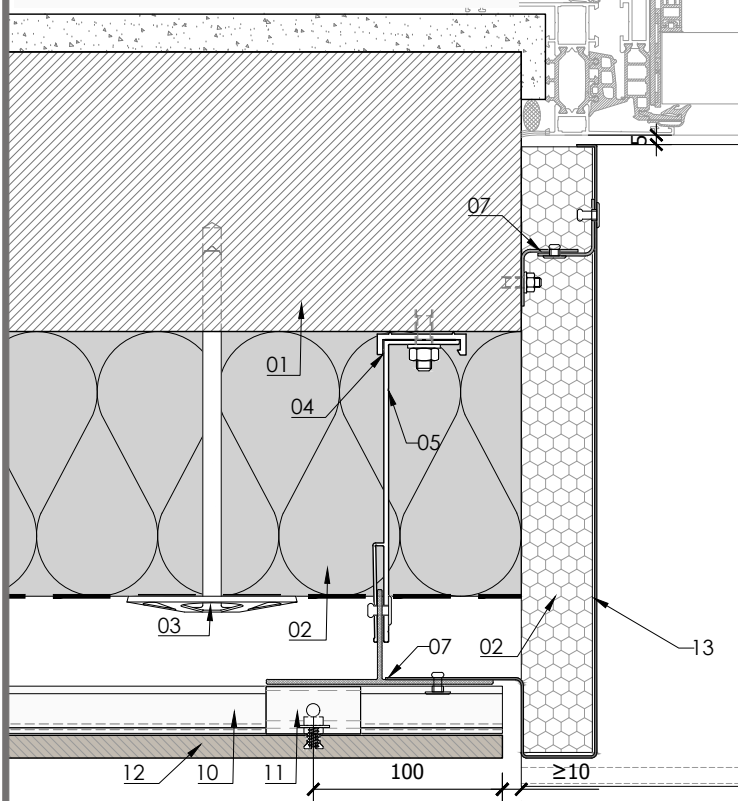
### MATERIALS

- 01 - Support (eg: concrete, core bricks...)
- 02 - Insulation layer (eg: mineral wool ...)
- 03 - Insulation layer fixing element
- 04 - Thermo-stop

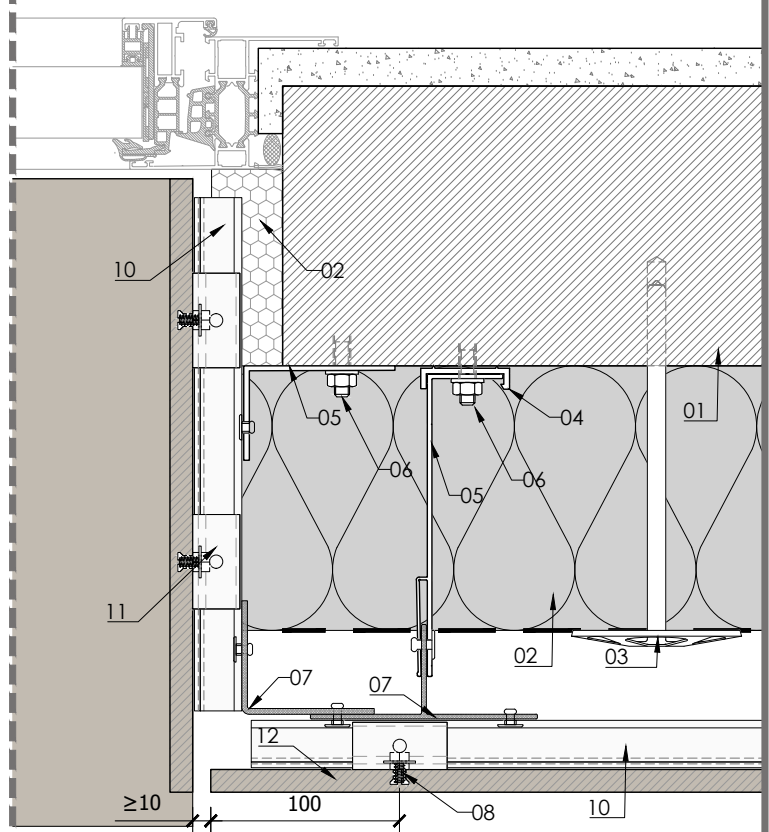
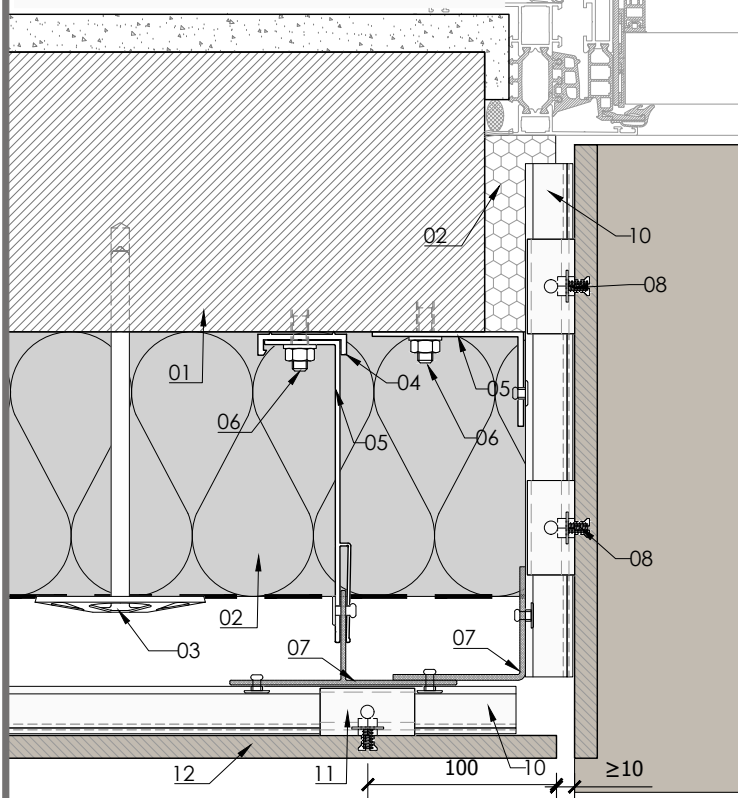
- 05 - Bracket (eg: aluminium, galvanised steel...)
- 06 - Anchor
- 07 - Vertical T profile
- 08 - Keil KH AA 7,0
- 09 - Vapour barrier

- 10 - Horizontal C rail
- 11 - Clip/Hanger
- 12 - Lapitec 12 mm thickness
- 13 - Flashing

Detail H1-4 Window jamb solution with flashing



Detail H1-4 Window jamb solution with Lapitec



### MATERIALS

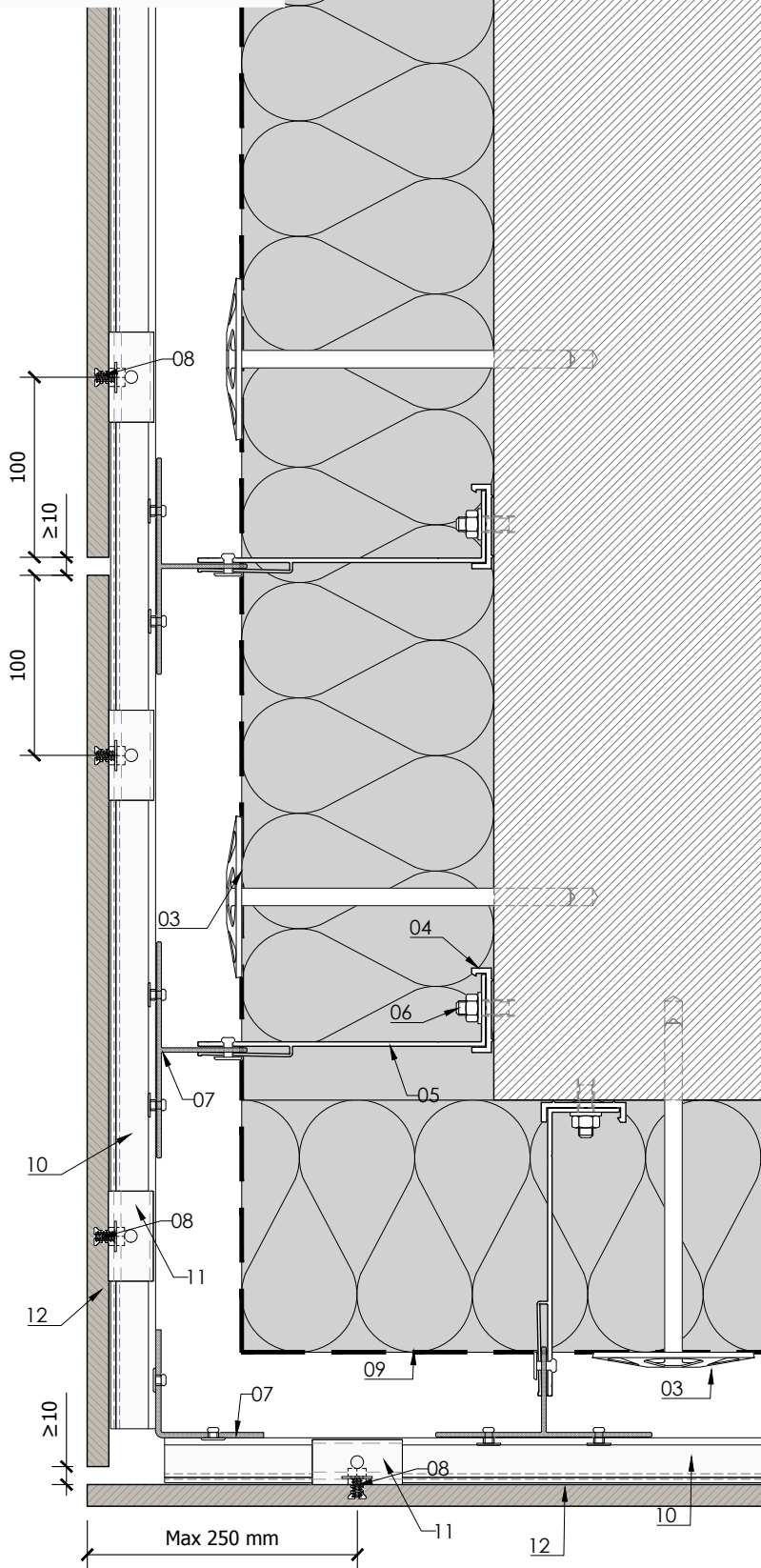
- 01 - Support (eg: concrete, core bricks...)
- 02 - Insulation layer (eg: mineral wool ...)
- 03 - Insulation layer fixing element
- 04 - Thermo-stop

- 05 - Bracket (eg: aluminium, galvanised steel...)
- 06 - Anchor
- 07 - Vertical T profile
- 08 - Keil KH AA 7,0
- 09 - Vapour barrier

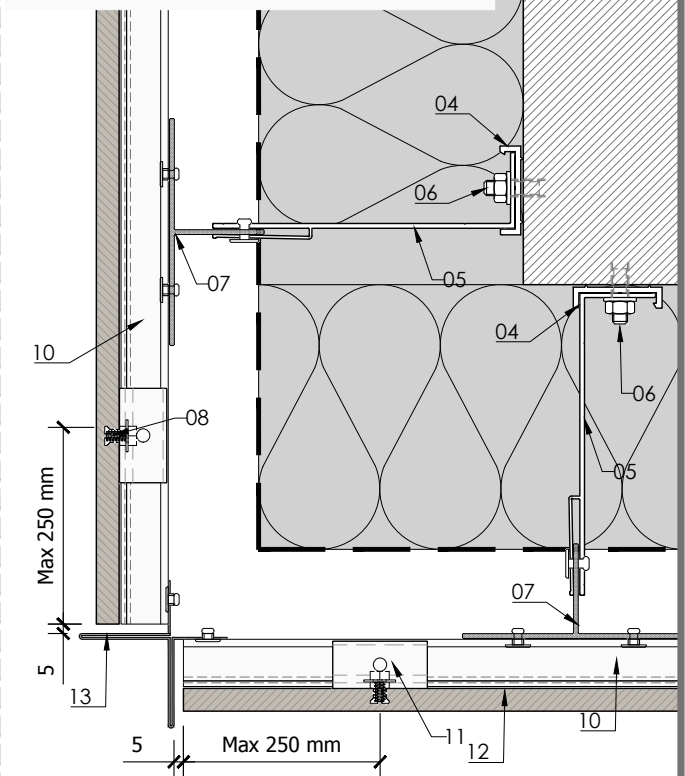
- 10 - Horizontal C rail
- 11 - Clip/Hanger
- 12 - Lapitec 12 mm thickness
- 13 - Flashing

## SYSTEM LAPITEC H1 FIXING WITH KEIL KH AA

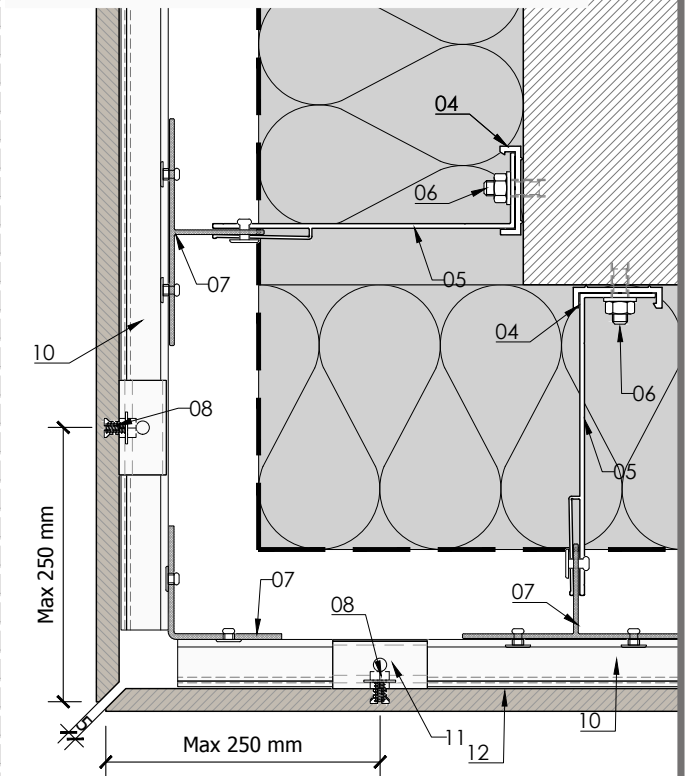
Detail H1- 6 Outer corner



Detail H1-7 Outer corner solution with flashing



Detail H1-8 Outer corner solution with beveled slabs



### MATERIALS

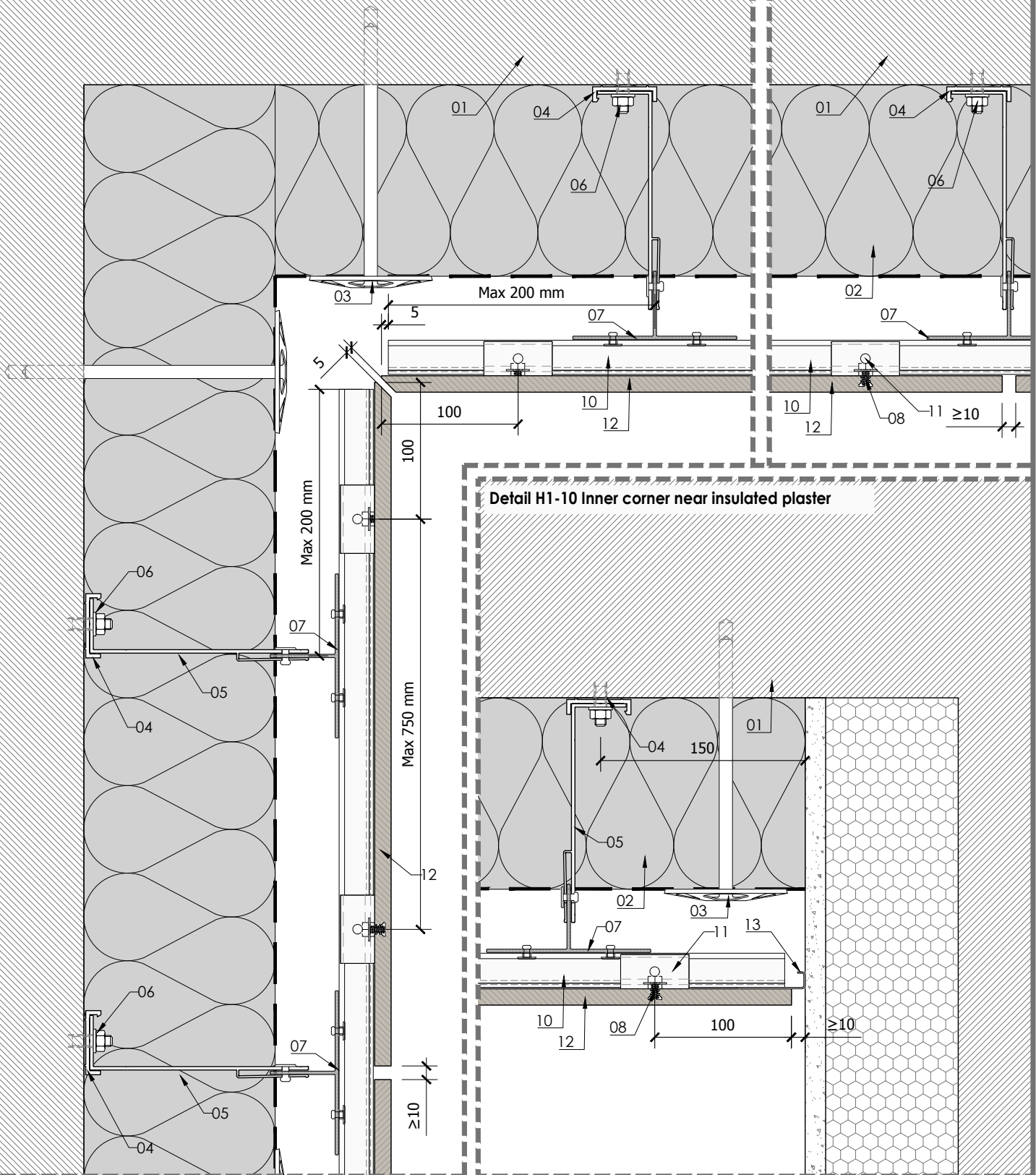
- 01 - Support (eg: concrete, core bricks...)
- 02 - Insulation layer (eg: mineral wool ...)
- 03 - Insulation layer fixing element
- 04 - Thermo-stop

- 05 - Bracket (eg: aluminium, galvanised steel...)
- 06 - Anchor
- 07 - Vertical T profile
- 08 - Keil KH AA 7,0
- 09 - Vapour barrier

- 10 - Horizontal C rail
- 11 - Clip/Hanger
- 12 - Lapitec 12 mm thickness
- 13 - Flashing

## SYSTEM LAPITEC H1 FIXING WITH KEIL KH AA

Detail H1-9 Inner corner solution with beveled slabs



### MATERIALS

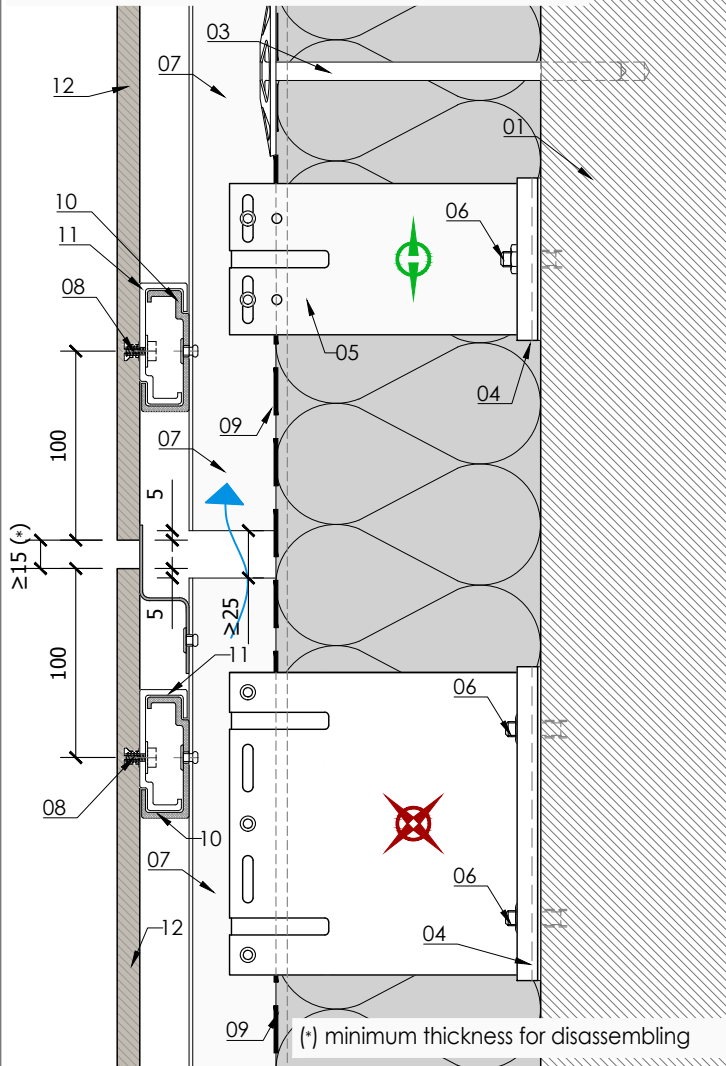
01 - Support (eg: concrete, core bricks...)  
02 - Insulation layer (eg: mineral wool ...)  
03 - Insulation layer fixing element  
04 - Thermo-stop

05 - Bracket (eg: aluminium, galvanised steel...)  
06 - Anchor  
07 - Vertical T profile  
08 - Keil KH AA 7,0  
09 - Vapour barrier

10 - Horizontal C rail  
11 - Clip/Hanger  
12 - Lapitec 12 mm thickness  
13 - Flashing

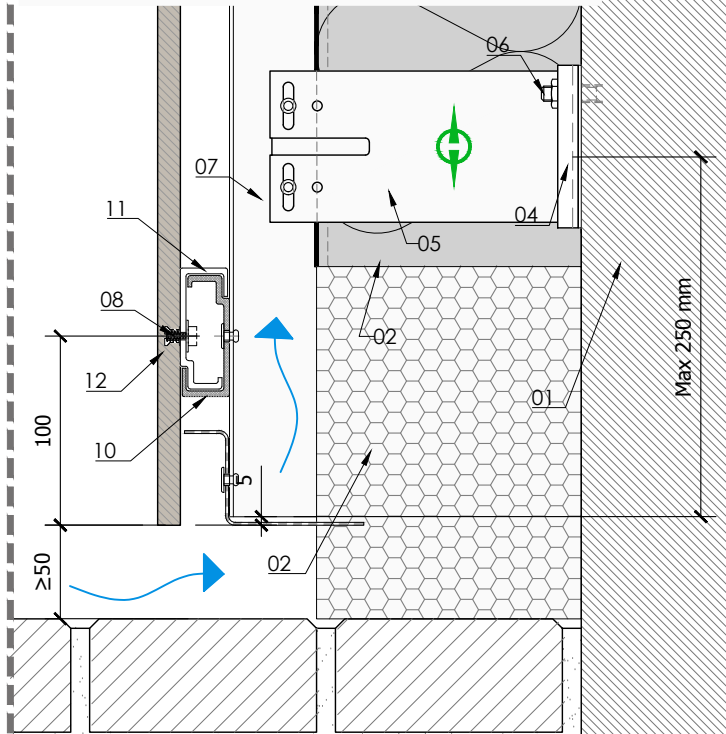
## SYSTEM LAPITEC H1 FIXING WITH KEIL KH AA

**Detail H1-11 Horizontal joint (T profiles junction)**



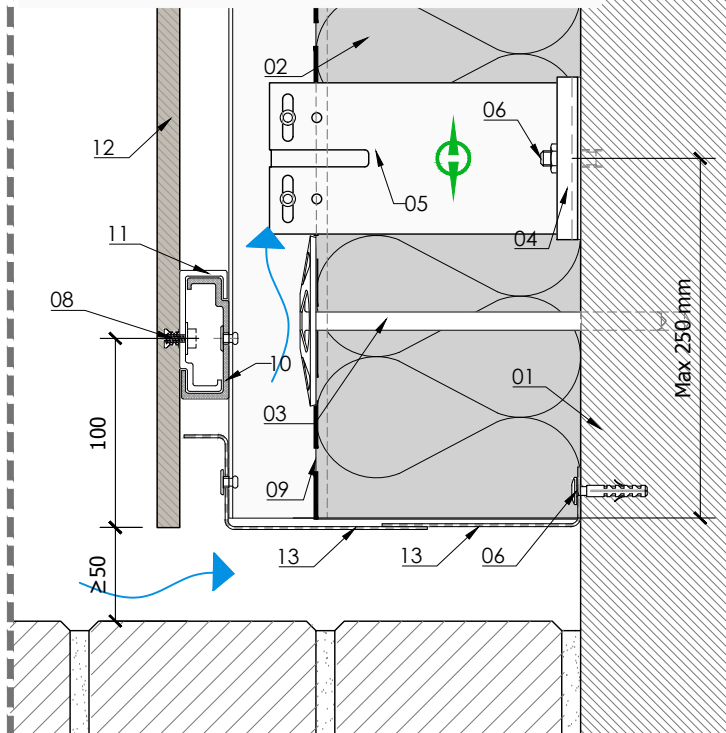
(\*) minimum thickness for disassembling

**Detail H1-13 Baseboard termination with insulation**



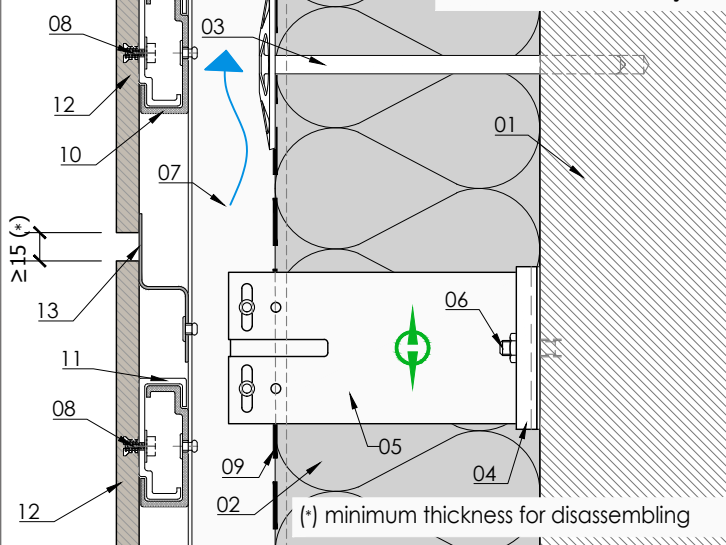
Max 250 mm

**Detail H1-14 Baseboard termination without insulation**



Max 250 mm

**Detail H1-12 Horizontal joint**



(\*) minimum thickness for disassembling

### MATERIALS

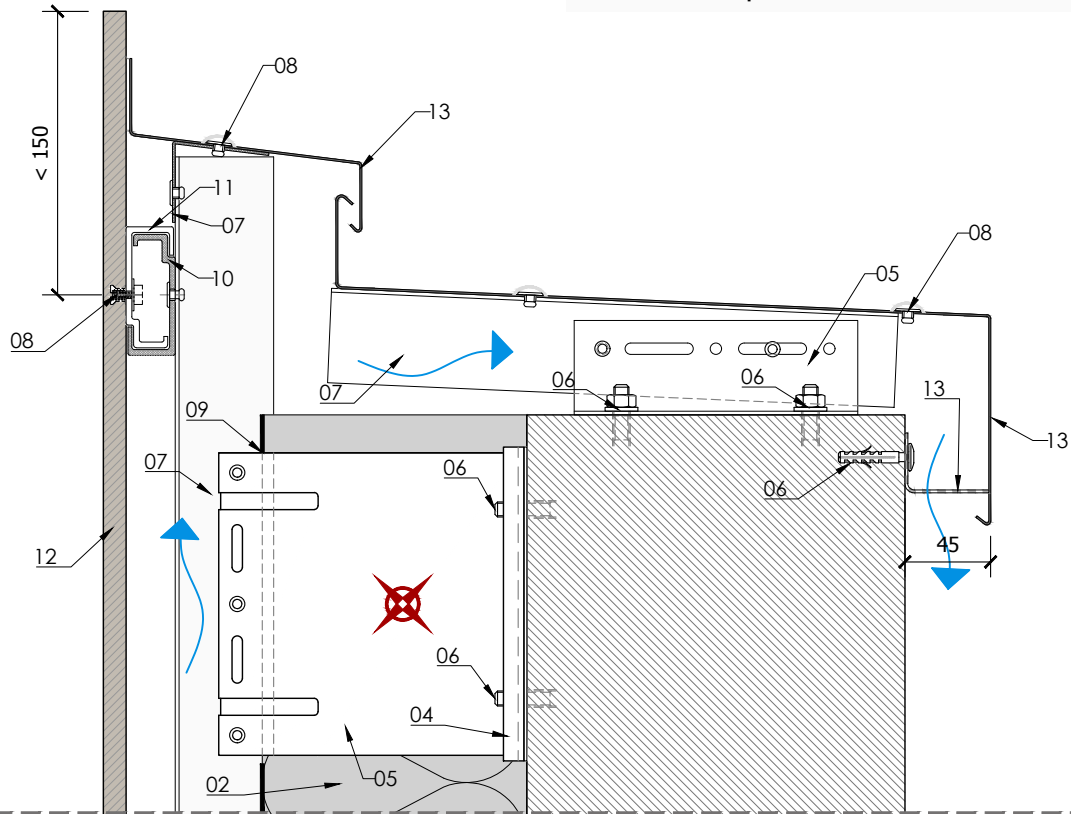
- 01 - Support (eg: concrete, core bricks...)
- 02 - Insulation layer (eg: mineral wool ...)
- 03 - Insulation layer fixing element
- 04 - Thermo-stop

- 05 - Bracket (eg: aluminium, galvanised steel...)
- 06 - Anchor
- 07 - Vertical T profile
- 08 - Keil KH AA 7,0
- 09 - Vapour barrier

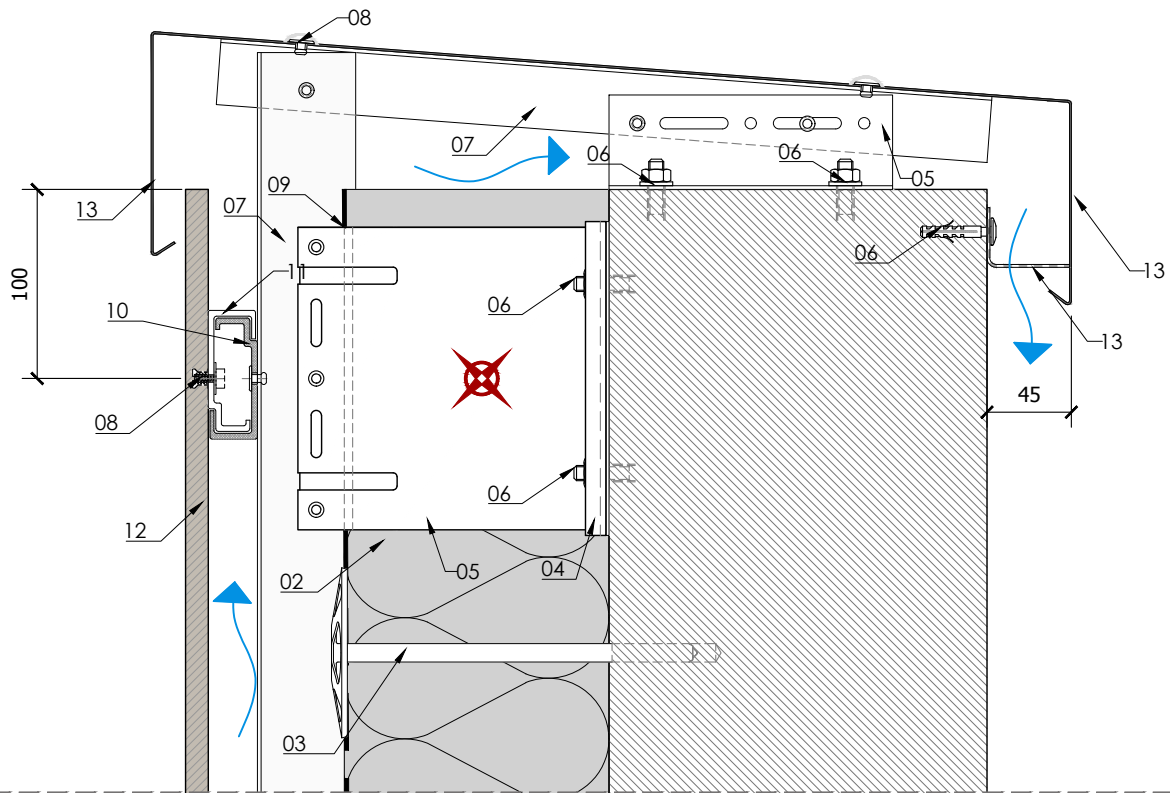
- 10 - Horizontal C rail
- 11 - Clip/Hanger
- 12 - Lapitec 12 mm thickness
- 13 - Flashing

## SYSTEM LAPITEC H1 FIXING WITH KEIL KH AA

Detail H1-15 Parapet termination solution with invisible flashing



Detail H1-16 Parapet termination solution with visible flashing



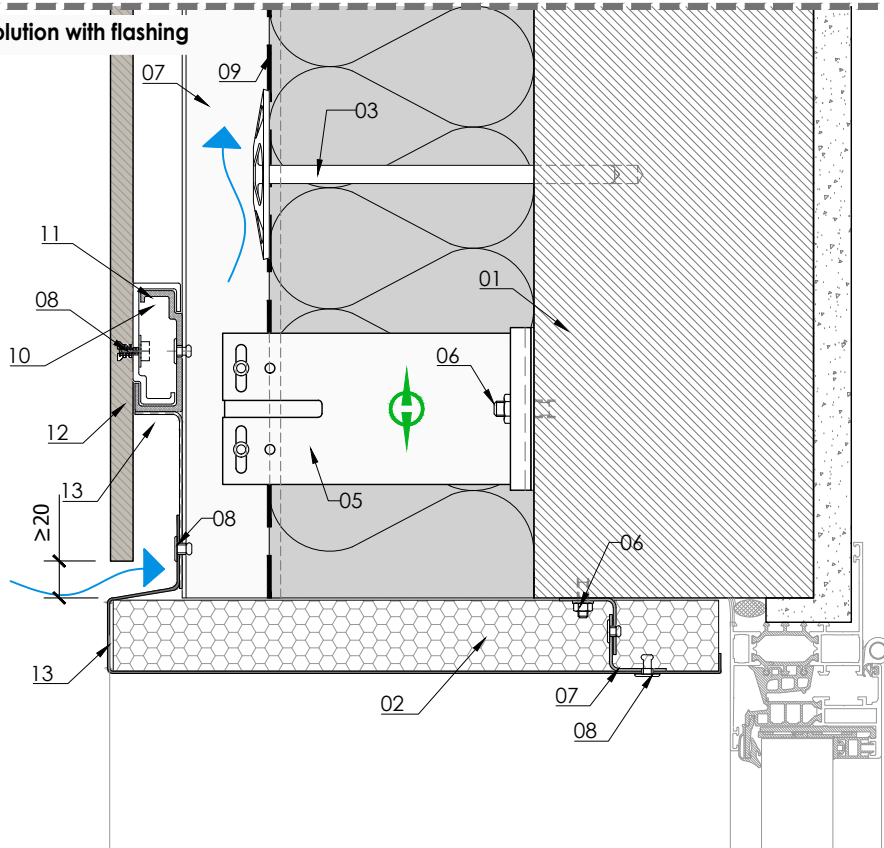
### MATERIALS

01 - Support (eg: concrete, core bricks...)  
02 - Insulation layer (eg: mineral wool ...)  
03 - Insulation layer fixing element  
04 - Thermo-stop

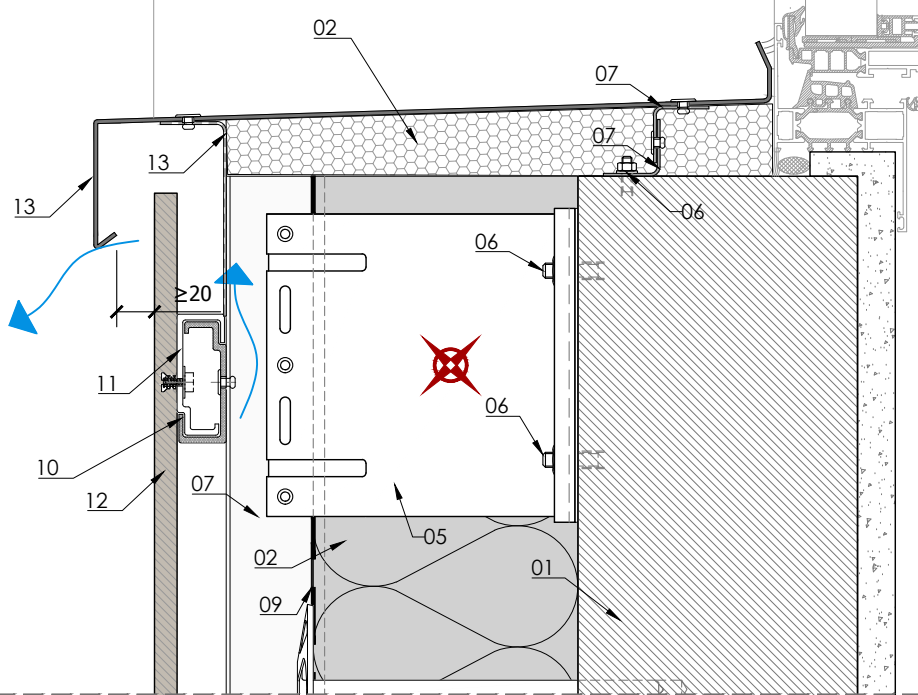
05 - Bracket (eg: aluminium, galvanised steel...)  
06 - Anchor  
07 - Vertical T profile  
08 - Keil KH AA 7,0  
09 - Vapour barrier

10 - Horizontal C rail  
11 - Clip/Hanger  
12 - Lapitec 12 mm thickness  
13 - Flashing

Detail H1-16 Window lintel solution with flashing



Detail H1-17 Windowsill solution with flashing



### MATERIALS

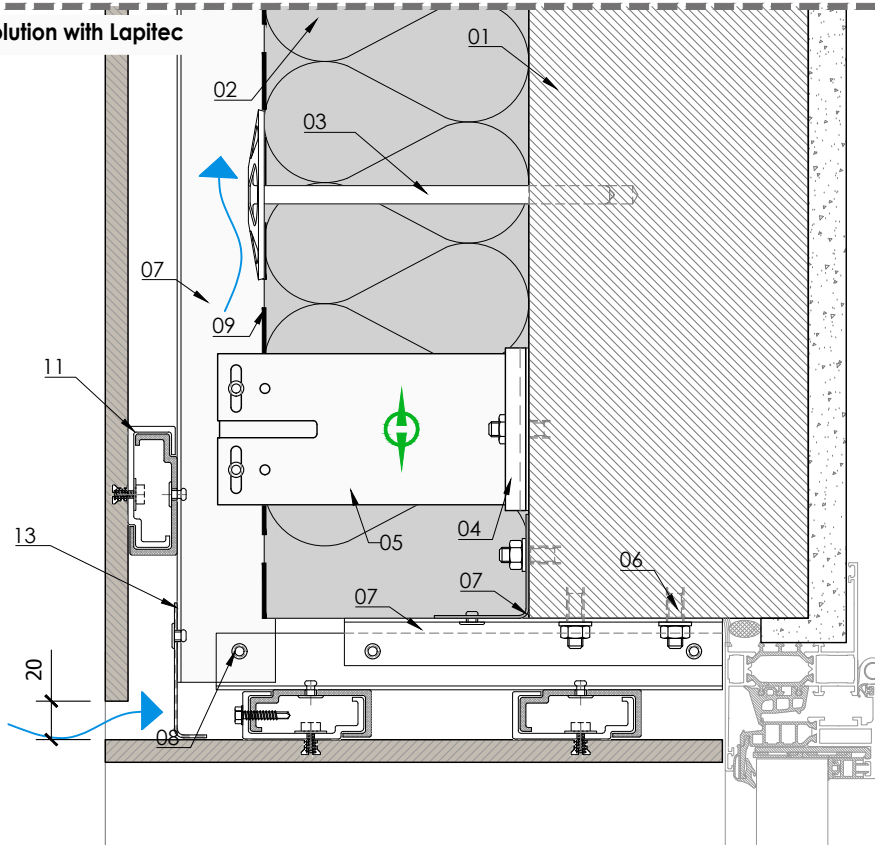
01 - Support (eg: concrete, core bricks...)  
02 - Insulation layer (eg: mineral wool ...)  
03 - Insulation layer fixing element  
04 - Thermo-stop

05 - Bracket (eg: aluminium, galvanised steel...)  
06 - Anchor  
07 - Vertical T profile  
08 - Keil KH AA 7,0  
09 - Vapour barrier

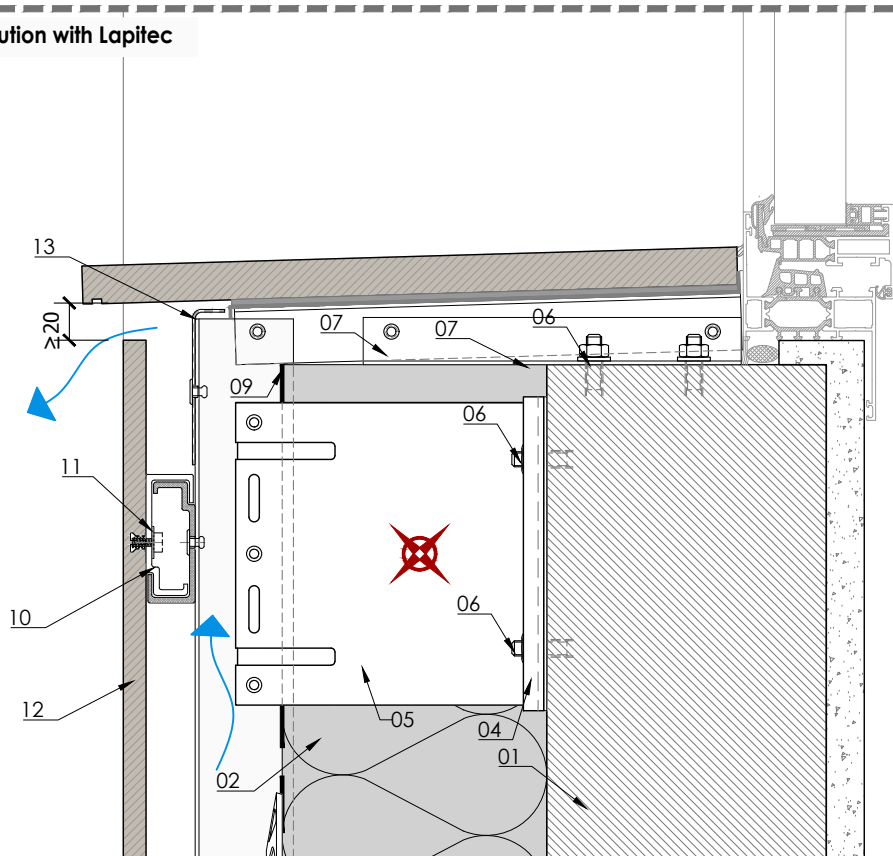
10 - Horizontal C rail  
11 - Clip/Hanger  
12 - Lapitec 12 mm thickness  
13 - Flashing



Detail H1-18 Window lintel solution with Lapitec



Detail H1-19 Windowsill solution with Lapitec



### MATERIALS

01 - Support (eg: concrete, core bricks...)  
02 - Insulation layer (eg: mineral wool ...)  
03 - Insulation layer fixing element  
04 - Thermo-stop

05 - Bracket (eg: aluminium, galvanised steel...)  
06 - Anchor  
07 - Vertical T profile  
08 - Keil KH AA 7,0  
09 - Vapour barrier

10 - Horizontal C rail  
11 - Clip/Hanger  
12 - Lapitec 12 mm thickness  
13 - Flashing